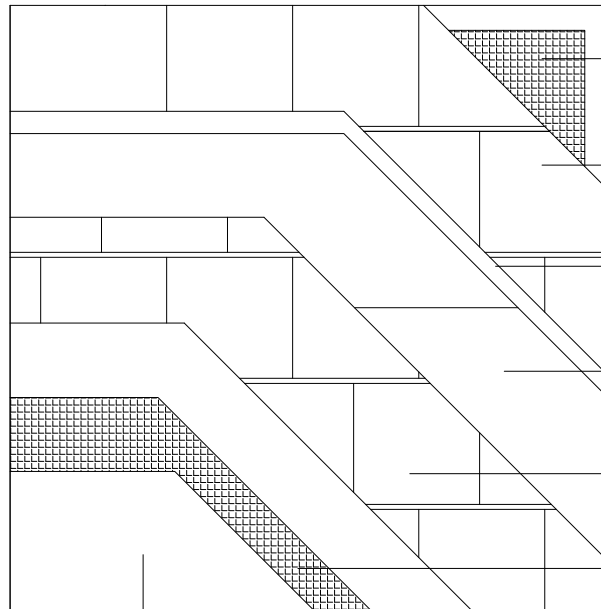


## Muratura in mattoni crudi isolata in canapa

muratura in mattoni crudi: GEOSANA  
Isolante in canapa: CANATON - geosana



Intonaco con rete  
sp. 2.0 cm

Mattone pesante in terra cruda  
sp. 12.0 x 25.0 x 25.0 cm

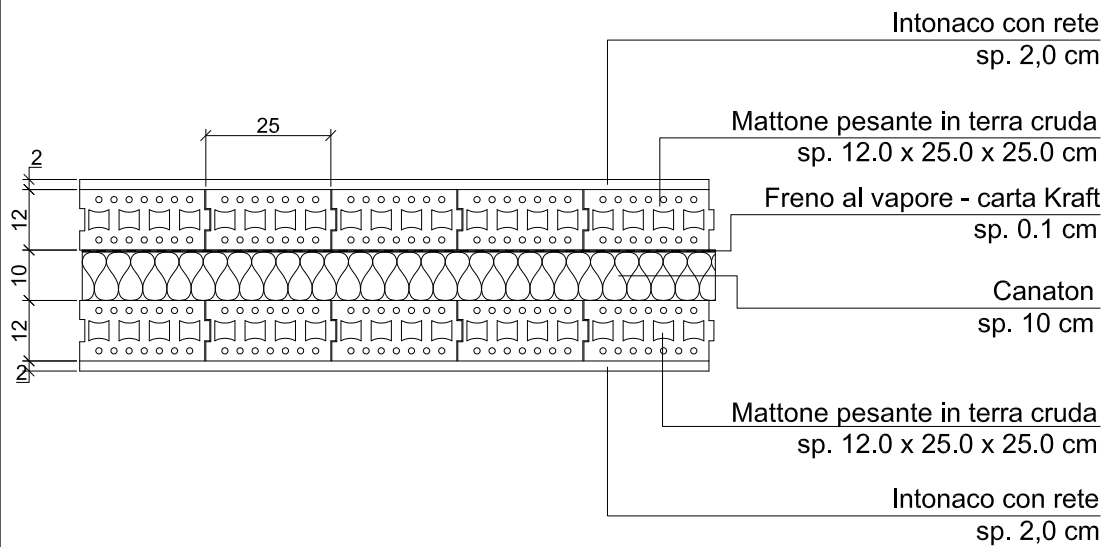
Freno al vapore  
Carta Kraft

Pannello isolante in Canapa  
sp. 10.0 cm

Mattone pesante in terra cruda  
sp. 12.0 x 25.0 x 25.0 cm

Rete da intonaco

Intonaco esterno  
sp. 2.0 cm



Intonaco con rete  
sp. 2,0 cm

Mattone pesante in terra cruda  
sp. 12.0 x 25.0 x 25.0 cm

Freno al vapore - carta Kraft  
sp. 0.1 cm

Canaton  
sp. 10 cm

Mattone pesante in terra cruda  
sp. 12.0 x 25.0 x 25.0 cm

Intonaco con rete  
sp. 2,0 cm

0 25 50 100 cm